



Back to SCHOOL

WELCOME TO YEAR 5 WITH MR. CLAY, MR. BIRD AND MRS. HARRISON

NOTES

GETTING READY

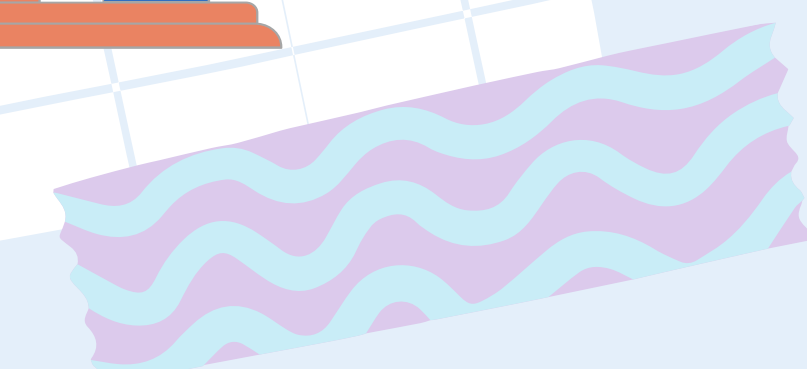
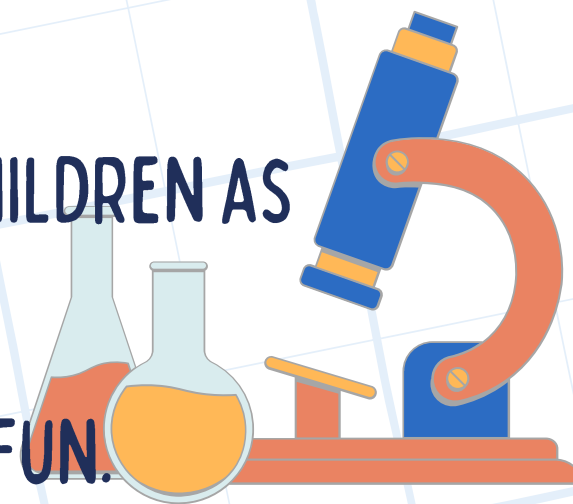
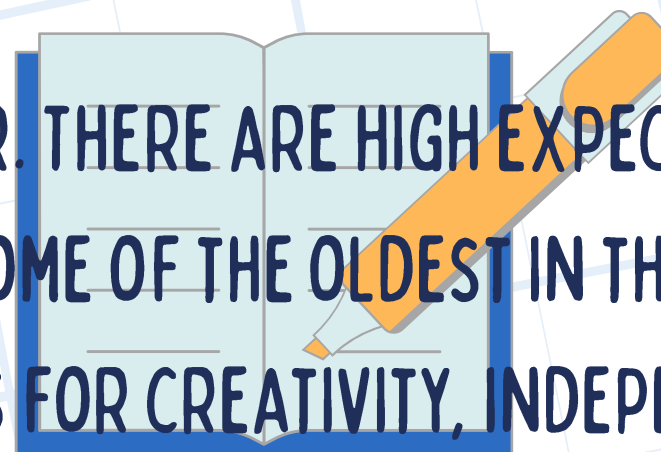
WHAT'S IN STORE FOR YEAR 5?

OUR AIMS...

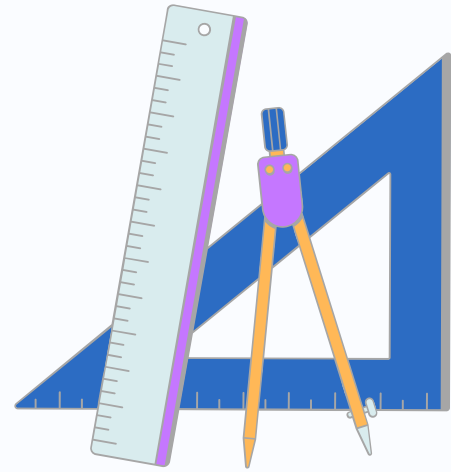
- HAVE A VERY HAPPY AND SUCCESSFUL PENULTIMATE YEAR OF PRIMARY SCHOOL.
- BUILD CONFIDENCE AND INDEPENDENCE TO FEEL READY FOR THEIR FINAL YEAR AT PRIMARY, AND THE CHALLENGES THAT LAY AHEAD.

• YEAR 5 IS AN IMPORTANT YEAR. THERE ARE HIGH EXPECTATIONS OF CHILDREN AS THEY ARE NOW SOME OF THE OLDEST IN THE SCHOOL.

• LOTS OF OPPORTUNITIES FOR CREATIVITY, INDEPENDENCE AND FUN.



EMBRACING THE NEW SCHOOL YEAR AND SETTING THE STANDARD



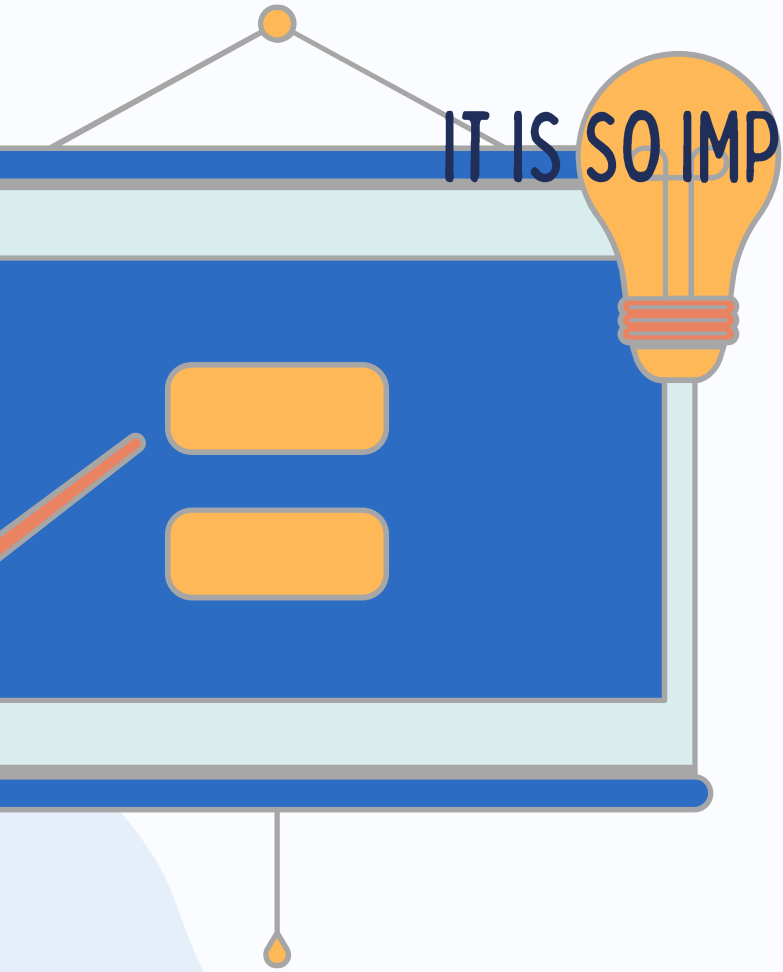
- CORRECT SCHOOL UNIFORM TO BE WORN AT ALL TIMES - BLACK/GREY TROUSERS OR SKIRT (NO LEGGINGS), WHITE POLO SHIRT/SHIRT/BLOUSE, ROYAL BLUE JUMPER/CARDIGAN OR HOODED JACKET, BLACK, SMART SHOES (THESE CAN BE BLACK TRAINERS).
- PE KIT - BLACK BOTTOMS, WHITE T-SHIRT, BLACK JACKET, TRAINERS
- NO JEWELLERY APART FROM ONE PAIR OF STUD EAR RINGS

- SCHOOL DOORS OPEN FROM 8.45AM AND CLOSE PROMPTLY AT 8.50AM.
- ONCE THE DOOR IS LOCKED ALL CHILDREN MUST ENTER SCHOOL VIA THE MAIN ENTRANCE TO BE RECORDED AS LATE.

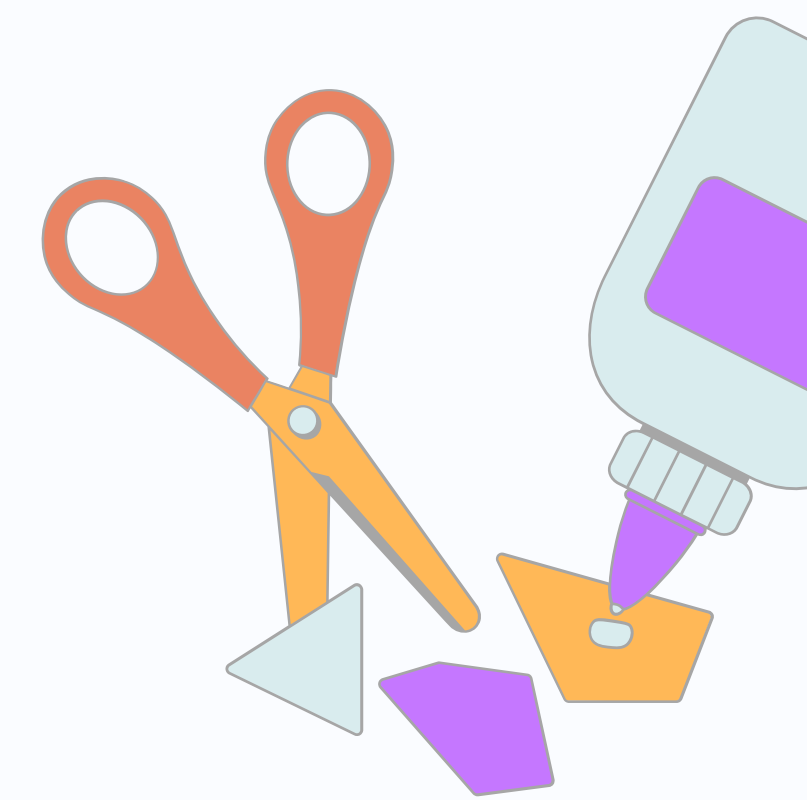
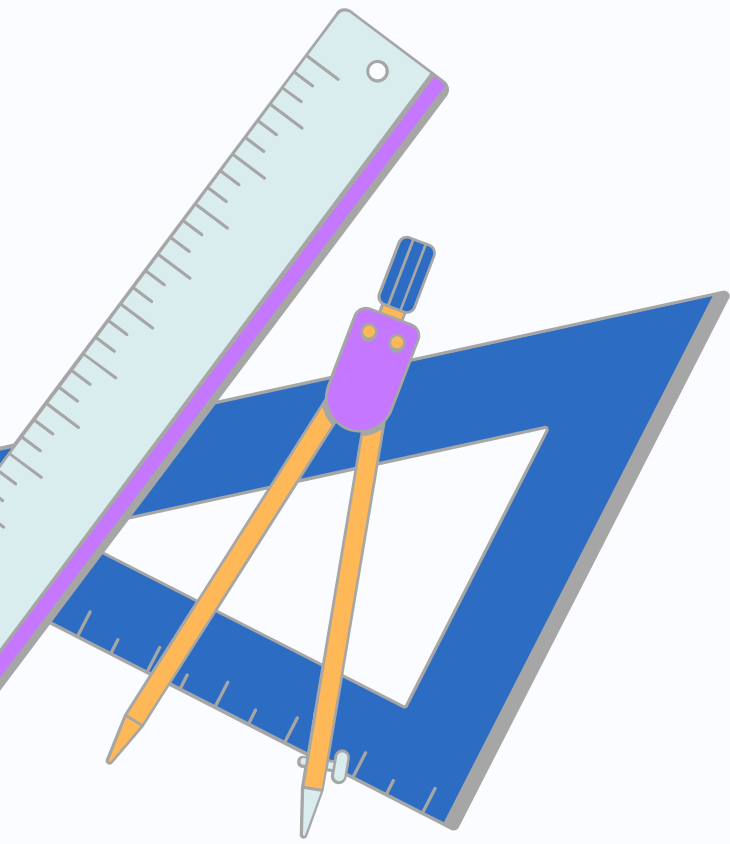
IT IS SO IMPORTANT THAT YOUR CHILD IS HERE ON TIME AND REGULARLY - POOR ATTENDANCE RESULTS IN LOST LEARNING.

ATTENDANCE AND PUNCTUALITY

THE SCHOOL DAY ENDS AT 3.20PM - YEAR 5 MUST BE PICKED UP FROM SCHOOL BY A PARENT / CARER OVER THE AGE OF 16.



WEEKLY TIMETABLE



ENGLISH AND MATHS LESSONS WILL TAKE
PLACE DAILY

LEARNING JOURNEY (HISTORY OR GEOGRAPHY)

SCIENCE

PSHRE

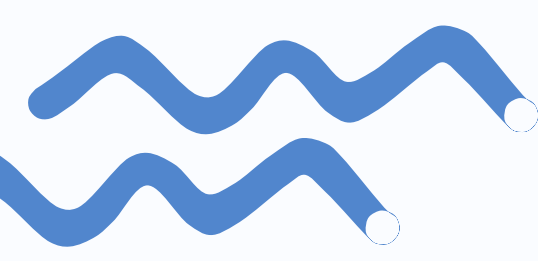
RE

FRENCH

MUSIC

COMPUTING

PE - WEDNESDAY



SUBJECTS IN MORE DETAIL

ENGLISH

HIDDEN FIGURES

JOURNEY TO JO'BURG

QUEEN OF DARKNESS

BEOWULF

THE MAN WHO WALKED BETWEEN

THE TOWERS

NOWHERE EMPORIUM

MATHS

PLACE VALUE

MULTIPLICATION AND DIVISION

FRACTIONS

SHAPES

STATISTICS

READING

GUIDED READING

FLUENCY AND

COMPREHENSION

SKILLS

READING FOR PLEASURE

READING AT HOME

SUBJECTS IN MORE DETAIL

LEARNING JOURNEY

SOUTH AFRICA

MOUNTAINS

THE ROMANS

ANGLO-SAXONS AND VIKINGS

CLIMATE CHANGE AND BIOMES

SCIENCE

EARTH & SPACE

MATERIALS

FORCES

LIVING THINGS AND THEIR

HABITATS

ANIMALS INCLUDING HUMANS

PSHRE

IN PSHRE, CHILDREN WILL LEARN ABOUT POSITIVE RELATIONSHIPS, KEEPING THEMSELVES HEALTHY AND OTHER LIFE SKILLS.

SPACE CENTRE - £32

ROMAN DAY WITH MUSEUM

ARTEFACTS AND A VIRTUAL LESSON

- £3

PARTAKE HISTORY VIKING DAY - £10

ASPIRATIONS WEEK

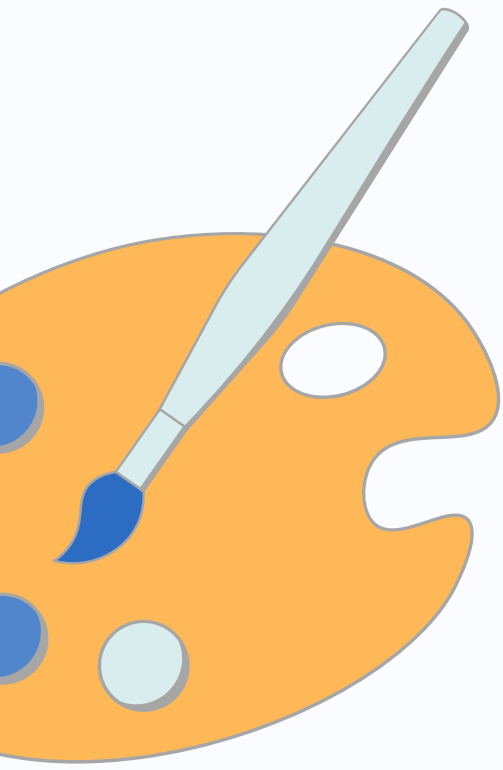
WALESBY RESIDENTIAL - £140

= APPROX. £185 FOR THE YEAR

(£92.50 PUPIL PREMIUM)

EXCITING TRIPS AND EXPERIENCES

YEAR 5 OFFERS A FANTASTIC YEAR FOR TRIPS AND EXPERIENCES. INFORMATION REGARDING DATES AND PRICES WILL BE GIVEN IN PLENTY OF TIME - IF THERE ARE ANY ISSUES PLEASE DON'T HESITATE TO COME AND TALK TO US 😊



TIPS FOR YEAR 5

LISTEN TO OR ENCOURAGE THEM TO READ OFTEN

TIMES TABLES PRACTISE WITH THEM

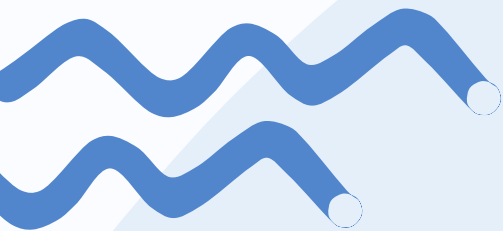
SPELLING PRACTISE WITH THEM

ENSURE THEY EAT WELL

ENSURE THEY GET PLENTY OF SLEEP

TALK TO THEM

MONITOR THEIR ELECTRONIC DEVICES



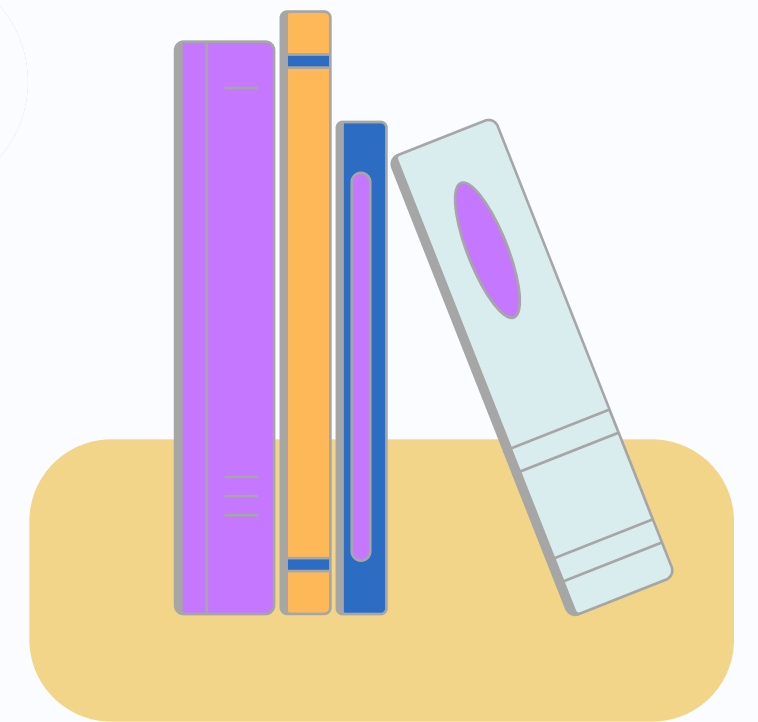
FUN AND EXCITEMENT

MOVING INTO YEAR 5 AND UPPER KS2 IS A HUGE STEP AND CAN BE INTENSE, BUT IT REALLY IS THE BEST YEAR! THE CHILDREN HAVE TO WORK HARD BUT WE ALWAYS ENSURE WE HAVE FUN TOO!



CELEBRATIONS

SPORTS DAY, VALUES ASSEMBLIES, DISCOS AND MUCH MORE...





THANK YOU FOR
YOUR TIME AND
SUPPORT!
ANY
QUESTIONS?