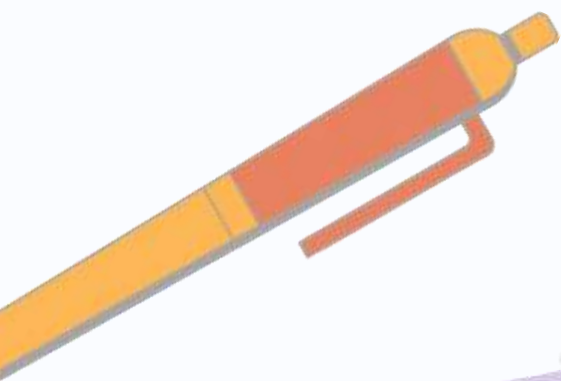




# Back to SCHOOL

WELCOME TO YEAR 4 WITH MR BURKE AND MISS MILLWARD



# GETTING READY

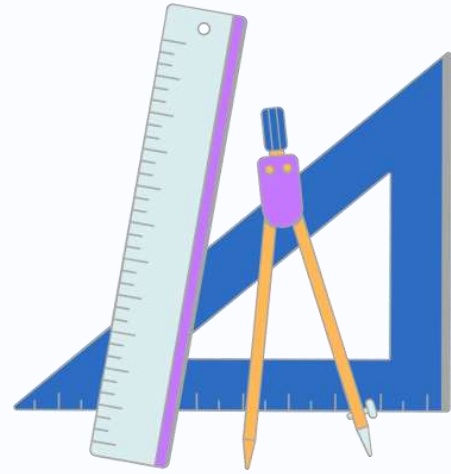
WHAT'S IN STORE FOR YEAR 4?

OUR AIMS...

- HAVE A VERY HAPPY AND SUCCESSFUL FINAL YEAR OF PRIMARY SCHOOL
- BUILD CONFIDENCE AND INDEPENDENCE TO FEEL READY FOR SECONDARY SCHOOL, AND THE CHALLENGES THAT LAY AHEAD



# EMBRACING THE NEW SCHOOL YEAR AND SETTING THE STANDARD



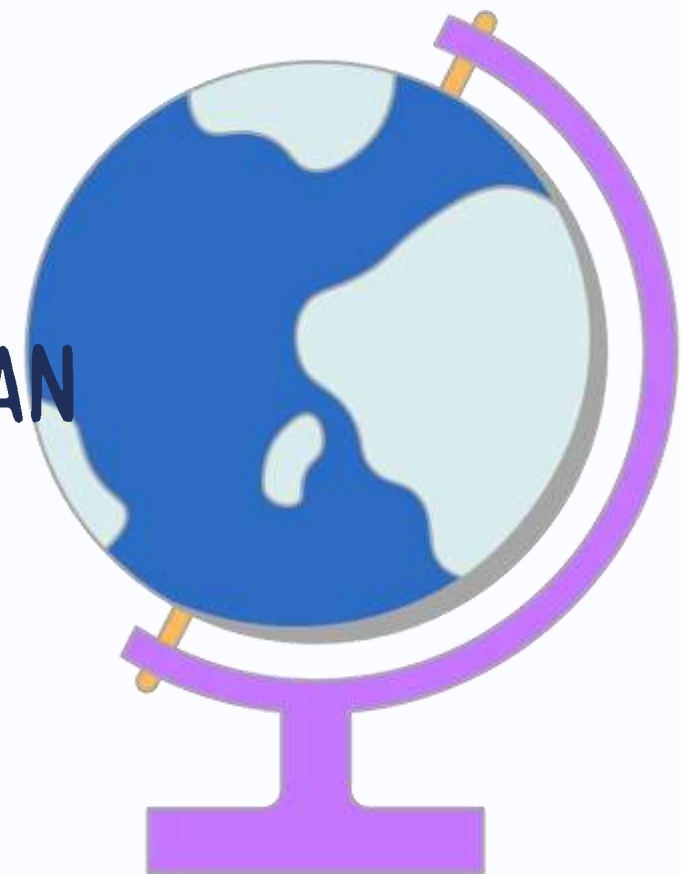
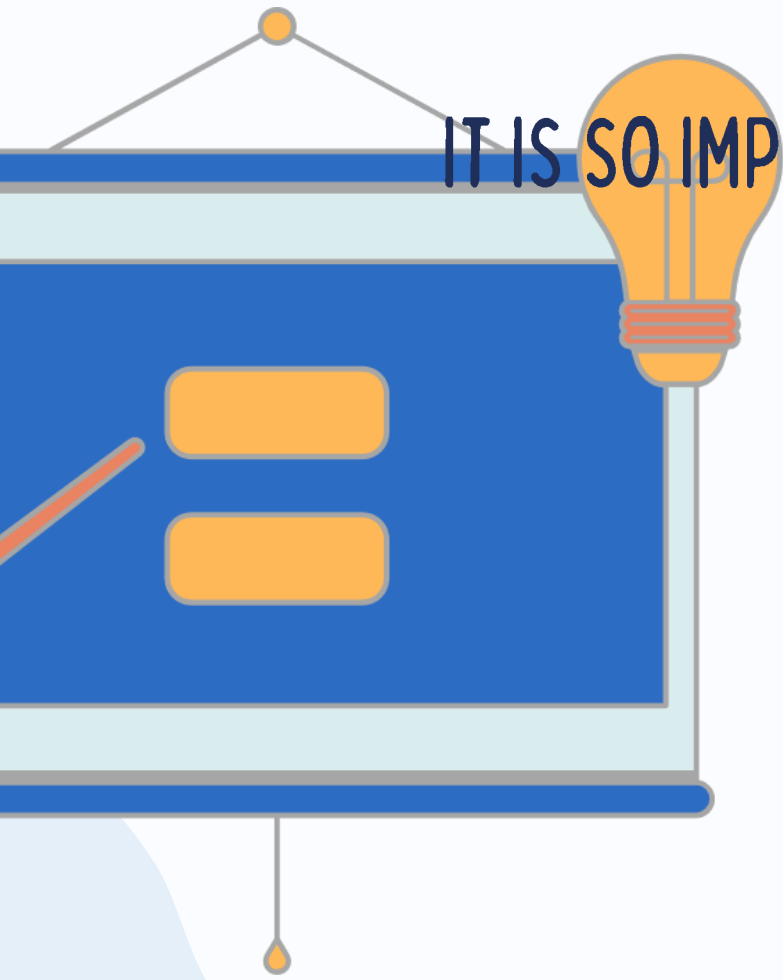
- CORRECT SCHOOL UNIFORM TO BE WORN AT ALL TIMES - BLACK/GREY TROUSERS OR SKIRT (NO LEGGINGS), WHITE POLO SHIRT/SHIRT/BLOUSE, ROYAL BLUE JUMPER/CARDIGAN OR HOODED JACKET, BLACK, SMART SHOES (THESE CAN BE BLACK TRAINERS).
- PE UNIFORM - BLACK BOTTOMS, WHITE TSHIRT, BLACK JACKET, TRAINERS
- NO JEWELLERY APART FROM ONE PAIR OF STUD EAR RINGS

- SCHOOL DOORS OPEN FROM 8.45AM AND CLOSE PROMPTLY AT 8.50AM.
- ONCE DOOR IS LOCKED ALL CHILDREN MUST ENTER SCHOOL VIA THE MAIN ENTRANCE TO BE RECORDED AS LATE.

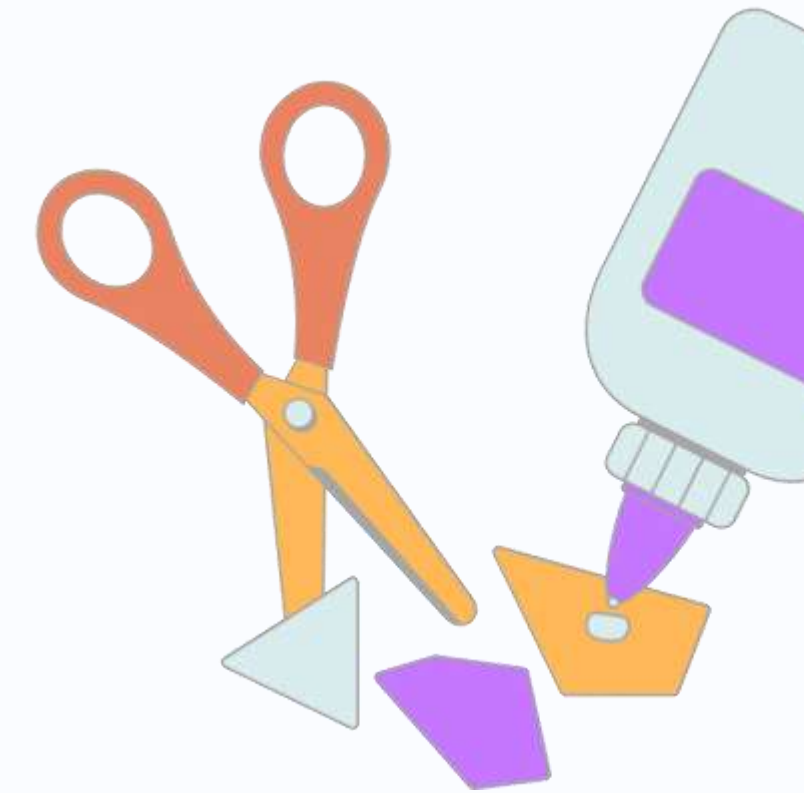
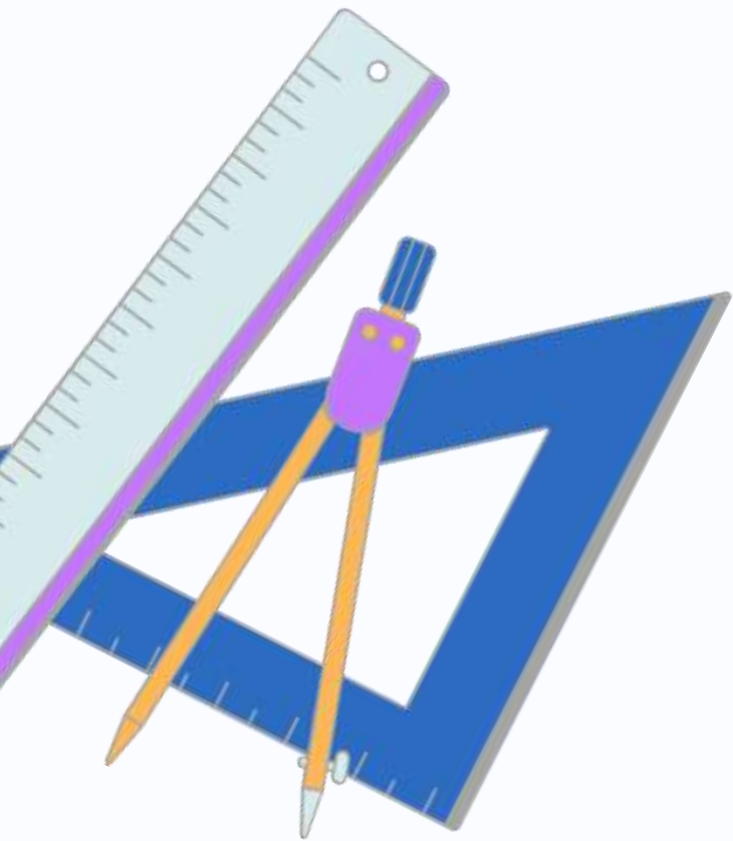
IT IS SO IMPORTANT THAT YOUR CHILD IS HERE ON TIME AND REGULARLY - POOR ATTENDANCE RESULTS IN LOST LEARNING

# ATTENDANCE AND PUNCTUALITY

THE SCHOOL DAY ENDS AT 3.20PM – ALL CHILDREN NEED TO BE COLLECTED BY AN ADULT



# WEEKLY TIMETABLE



ENGLISH AND MATHS LESSONS WILL

TAKE PLACE DAILY

LEARNING JOURNEY (HISTORY OR  
GEOGRAPHY)

SCIENCE

TIMES TABLES

SWIMMING (TUESDAY OR FRIDAY)

RE, FRENCH

MUSIC, COMPUTING

PE - THURSDAY



# SUBJECTS IN MORE DETAIL

## LEARNING JOURNEY

RIVERS

ANCIENT EGYPT

ANCIENT GREEKS

## SCIENCE

WATER

SOUND

PROPERTIES OF MATERIALS

ANIMALS INCLUDING HUMANS

## SWIMMING

ALL CHILDREN WILL ATTEND  
LAMMAS LEISURE CENTRE ALL  
YEAR.

AIM TO SWIM 25M ON FRONT AND  
BACK WITHOUT A SWIMMING AID.

# SUBJECTS IN MORE DETAIL

## ENGLISH

SPEECH

PUNCTUATION

EXPANDED NOUN PHRASES

FRONTED ADVERBIALS

## MATHS

PLACE VALUE

4 OPERATIONS

FRACTIONS

DECIMALS

SHAPE

GRAPHS AND CHARTS

## READING

GUIDED READING

FLUENCY AND

COMPREHENSION

SKILLS

READING FOR PLEASURE

READING AT HOME

LEA GREEN - RESIDENTIAL

£148

ANCIENT EGYPT LEARNING CAFE

YORKSHIRE WILDLIFE PARK- £25

ASPIRATIONS DAY

# EXCITING TRIPS AND EXPERIENCES

YEAR 4 OFFERS A FANTASTIC YEAR FOR TRIPS AND EXPERIENCES. INFORMATION WILL REGARDING DATES AND PRICES WILL BE GIVEN IN PLENTY OF TIME - IF THERE ARE ANY ISSUES PLEASE DON'T HESITATE TO COME AND TALK TO US 😊



# MULTIPLICATION TABLES CHECK

- MTC WEEK 1<sup>ST</sup> JUNE OR 7<sup>TH</sup> JUNE
- CHILDREN WILL BE TESTED ON 25 RANDOM TIMES TABLE QUESTIONS
  - THE TESTS WILL ALL BE DONE ON THE SAME DAY
- CHILDREN WILL HAVE TIMES TABLE ROCKSTARS LOGONS TO HELP AT HOME

THERE WILL BE A MEETING LATER IN THE YEAR WHICH WILL GO INTO MORE DETAIL ABOUT THE TEST AND THEIR ADMINISTRATION.



# TIPS FOR YEAR 4

**LISTEN TO OR ENCOURAGE THEM TO READ OFTEN**

**TIMES TABLES PRACTICE WITH THEM**

**SPELLING PRACTICE WITH THEM**

**ENSURE THEY EAT WELL**

**ENSURE THEY GET PLENTY OF SLEEP**

**TALK TO THEM**





**THANK YOU FOR  
YOUR TIME AND  
SUPPORT  
ANY  
QUESTIONS?**